

6 WATCH TV

Change the channel you are watching by entering the three-digit channel number using the number buttons on the remote control. Or, you can press the **P+** or **P-** buttons to step through the channels in order.

Press the **V+** and **V-** buttons to turn the volume up or down. You can turn off the sound altogether with the **MUTE** button. The sound comes back on when you press **MUTE** again.

When subtitles are available for a programme it is indicated by a **SUB** symbol in the browsing bar at the bottom of the screen when you switch channels (press **INFO** at anytime whilst watching TV to display the bar). Press the **SUB** button to display the subtitles menu and use the **UP** and **DOWN** buttons to move the orange highlight bar to "English" if you want to turn on subtitles, or "Off" to turn off subtitles, and then press **OK**.

If audio description (a spoken description of the broadcast) is available for a programme it is indicated by an **AD** symbol in the browsing bar. To turn on audio description, press the **AD** button to display the available audio menu and then select "English Audio Description".

Browse the scheduled programmes using the **UP** and **DOWN** buttons to move through the channels and the **LEFT** and **RIGHT** buttons to move the orange highlight bar to show the programmes showing at different times.

Press **OK** to switch to the programme highlighted by the orange bar. If the programme is on at the time, the receiver will switch to that channel immediately. If the programme is scheduled for later on, a reminder is set. When the programme is about to start, a message is displayed on screen and, after a few seconds, the receiver automatically switches to the necessary channel.

When you have finished with the programme guide, return to normal TV viewing by pressing **EXIT**.



You can find out the programmes scheduled to be shown on all the freesat channels up to eight days ahead using the **EPG** button. Press the button and then press **OK**.

Digital text and interactive services are available from some freesat channels, and you can use them by following the on-screen prompts and pressing **TXT** or the **RED** button while watching the channel. This displays a menu of services available from that channel or broadcaster.

When you have finished with the interactive services, return to normal TV viewing by pressing **TXT** or **EXIT**.

Switch off your receiver by pressing the **POWER** button, and press the button again to turn it on.

Manhattan

Plaza DS • 100A Remote Control Handset

POWER **STANDBY** Switch on/off the receiver.

MUTE Silence the receiver's sound.

0, 1 ... 9 Numbers to select channels, etc. Numbers and letters to enter your postcode.

SWAP **SWAP** Switch to the previously selected channel.

FAV **FAV** Switch to the next channel in the Favourite Channels List.

MENU **MENU** Display (and exit) the Main Menu screen.

INFO **INFO** Display channel and programme information.

UP, DOWN, LEFT, RIGHT Move the highlight bar in menus and in the EPG. Browse the channels and programmes.

OK **OK** Select the current menu option.

LIST **LIST** Display the Channel List.

EPG **EPG** Display the electronic programme guide (EPG).



BACK **BACK** Exit a menu and return to the previous menu.

EXIT **EXIT** Exit a menu and return to normal TV viewing.

TV/DTV **TV/DTV** Switch between freesat and the TV's tuner.

V+ **V+**, **V-** Increase and decrease the sound volume.

P+, **P-** **P+**, **P-** Switch to the next/previous channel. Move one page up/down the channel list.

AD **AD** Displays the available audio menu to choose between different soundtracks (such as languages and audio description).

WIDE **WIDE** Switch between widescreen display formats on a conventional (4:3) TV.

SUB **SUB** Displays the subtitles menu used to select subtitles.

TXT **TXT** Display the interactive and digital text services (where available).

RED, GREEN, YELLOW, BLUE Choose options within menus

Manhattan

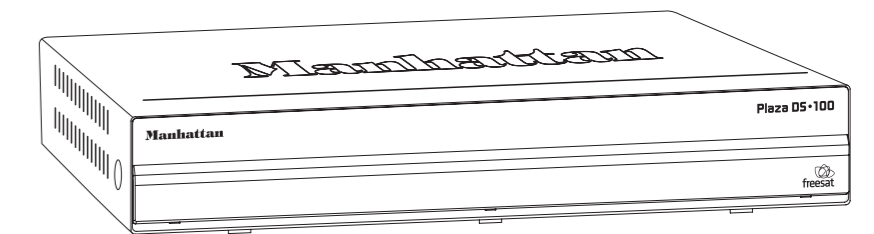
freesat SD

Quick Start Guide Plaza DS • 100A

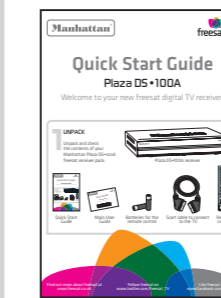
Welcome to your new freesat digital TV receiver.

1 UNPACK

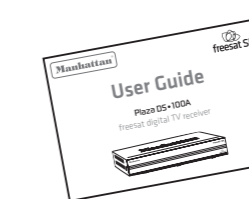
Unpack and check the contents of your Manhattan Plaza DS • 100A freesat receiver pack:



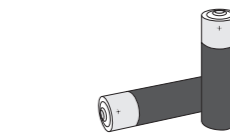
Plaza DS • 100A receiver



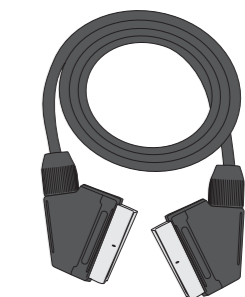
Quick Start Guide



Main User Guide



Batteries for the remote control



Scart cable to connect to the TV



Remote control

Find out more about freesat at www.freesat.co.uk

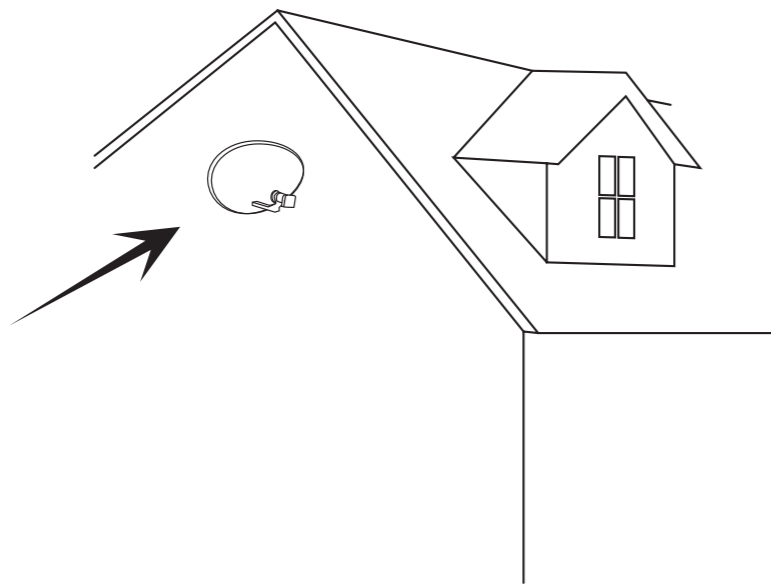
Follow freesat on www.twitter.com/freesat_TV

Like freesat on www.facebook.com/freesat

2 CONNECT TO A DISH

To receive freesat you must connect your Plaza DS•100A receiver to an appropriate satellite dish, fixed in position and accurately pointed at 28.2° East satellite position.

For safety reasons and to provide reliable reception, we strongly recommend that the dish is professionally installed. If you have any questions about the dish, please consult your installer.



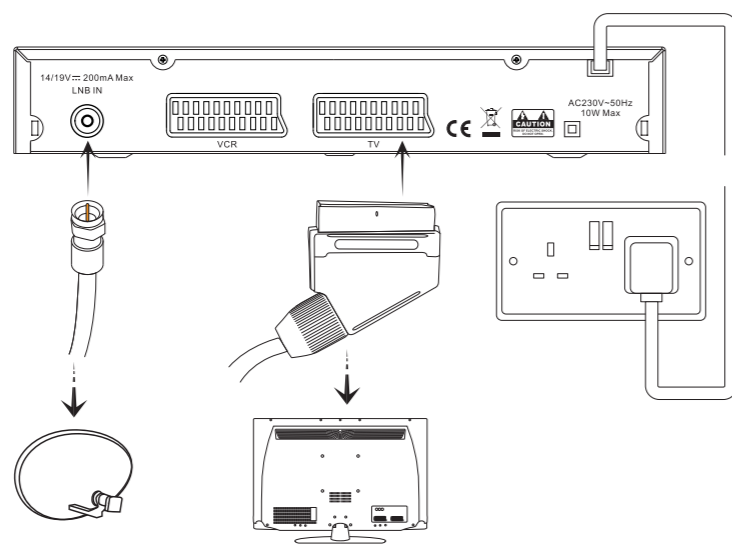
3 PLUG IN

Place your Plaza DS•100A receiver on a firm, level surface close to your television, a mains electricity socket, and the cable from the dish.

Connect the cable from your dish to the LNB IN socket at the back of the receiver.

Make sure your television is turned off and connect the SCART cable to the TV SCART socket on the rear of the Plaza DS•100A and to a SCART socket on your television (usually labelled AV). If you need more guidance, check your television manual.

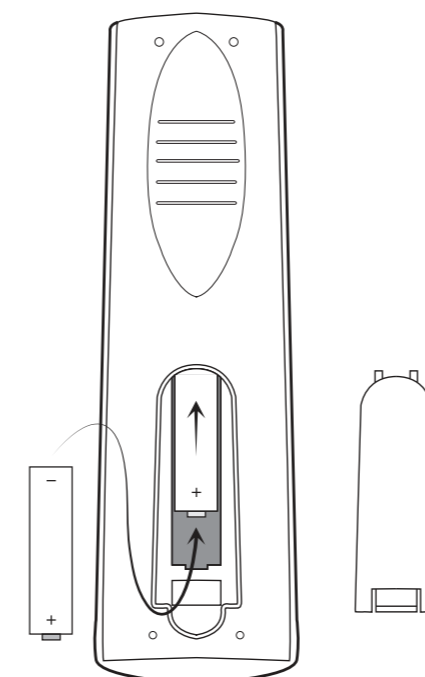
Plug the mains power lead into an available mains socket that is turned off.



4 SWITCH ON

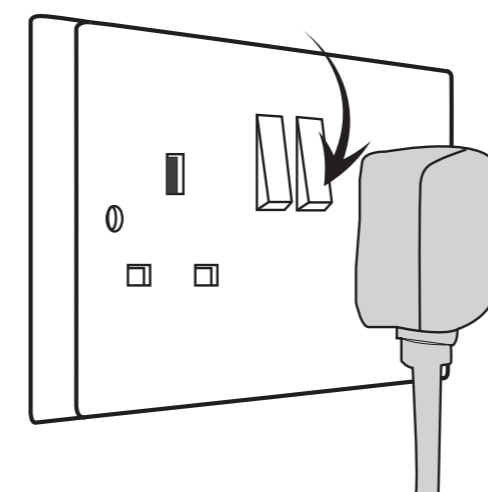
Remove the battery compartment cover from the back of the Plaza DS•100A remote control by lifting it up while pushing the catch. Insert the two AAA sized batteries as marked on the inside of the compartment. Replace the compartment cover.

Turn on your TV set and choose the SCART input (see your television manual).



Switch on the mains socket the Plaza DS•100A is connected to. After a few seconds, step one of the freesat installation process will be shown on the television screen.

If you do not see this screen (pictured opposite), please refer to the **Troubleshooting** section in the main user guide.



5 TUNE IN

When the first installation step is displayed, use the left and right buttons to select the screen type of your television (16:9 Widescreen or the squarer 4:3 Traditional). Press the down button to highlight the SCART output selection box, and then use the left and right buttons to select the correct output for your television (see your television's manual for guidance, or select Composite if unsure).

Press OK to display the next installation step.

If the signal check screen displays signal strength or quality below 50%, see the Troubleshooting section in the main user guide. Press OK to proceed to the next step.

Enter your postcode, pressing the number buttons an appropriate number of times to produce the letters (printed above each button) and numbers required, in the same way as 'texting' on a mobile phone. You do not need to enter a space. If you make a mistake, the left button deletes the previous character. Now press OK once to confirm the postcode and again to start the channel scan.

Your Plaza DS•100A receiver will take a couple of minutes to find and store the freesat channels available, displaying the total number of freesat TV and radio channels found. Press the OK button to display the next installation step.

Enter your choice of PIN (used to lock certain channels and functions) by pressing the required number button (0, 1... 9) for each of the four PIN digits. Press OK to proceed to the next step.

Setup is now complete. Your PIN number will be displayed on-screen along with reminder to make a note of it. When ready, press OK and enjoy watching freesat digital TV.

